



# MasterMap Linker User Guide

© 2009 AptiorIT

# Table of Contents

<b>1 Introduction</b>	<b>3</b>
1.1 Welcome.....	3
1.2 Installing MasterMap Linker.....	3
1.3 Purchasing and registration.....	4
1.4 Uninstalling the add-in.....	5
<b>2 Using MasterMap Linker</b>	<b>6</b>
2.1 Getting started.....	6
2.2 Refresh settings.....	8
2.3 Topic context menu.....	10
<b>3 Technical Support</b>	<b>11</b>

# 1 Introduction

This guide provides instructions about how to install **MasterMap Linker for MindManager** and start using the add-in.

## 1.1 Welcome

Thank you for trying this small but useful add-in for MindManager. **MasterMap Linker** is a great choice to ones who need to frequently consolidate information from multiple maps.

This add-in retrieves the current data values from other maps into a "dashboard" or master map. The master map uses hyperlinks to point to the topics from other maps and extracts the latest data from there - either specific topic information or the whole topic sub-tree.

## 1.2 Installing MasterMap Linker

1. Launch the installation package.
2. Follow the instructions on the screen until the setup wizard finishes program installing.

OR:

1. Start the **MasterMap Linker** installation. The **MasterMap Linker** Setup wizard opens. Click **Next**.
2. You must read and accept the licence agreement before continuing. Click **Next**.
3. Click **Next** to install to the default folder or click **Browse** to choose another folder and click **Next**.
4. Click **Install** to start the installation.
5. The **MasterMap Linker** installation starts.
6. If the installation finishes correctly, the last page of the **MasterMap Linker** Setup wizard opens. Click **Finish** to exit from the Setup Wizard.

## 1.3 Purchasing and registration

### Trial version

**MasterMap Linker** has 30 days trial period. To continue working with **MasterMap linker**, you have to purchase the license key and register your add-in.

### Purchasing

#### Free of charge license

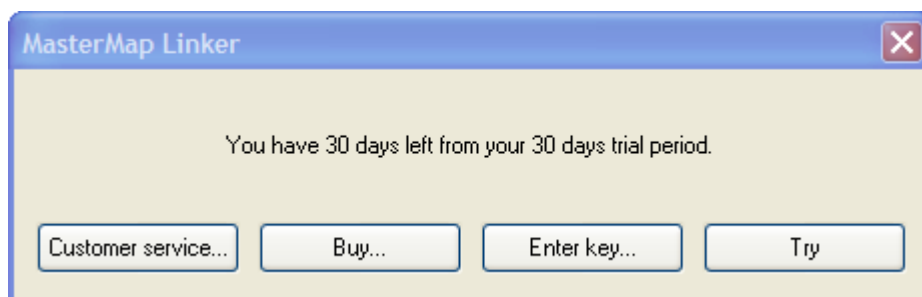
If you have already purchased products released by **ApriorIT** you can get the license key for **MasterMap Linker** for free. Just contact your reseller, provide your hardware fingerprint code (see details below) and you will get it.

List of purchased products which allow you to use the **MasterMap Linker** for free:

- Mind2Chart for MindManager
- Outlook EasyTask for MindManager
- MindMap Navigator for MindManager
- MS Project Adapter for MindManager

#### To purchase MasterMap Linker:

1. When MindManager starts you will be notified that your copy is not registered. Click on the **Buy...** button. It will navigate you to the site on which you can order **MasterMap Linker**.



2. When purchase is completed, your copy must be registered automatically. If automatic registration failed, then you will need to send the Purchase Order information and Hardware fingerprint code from the "Enter Key" dialog to [support@mind2chart.com](mailto:support@mind2chart.com) and we will provide you activation key.

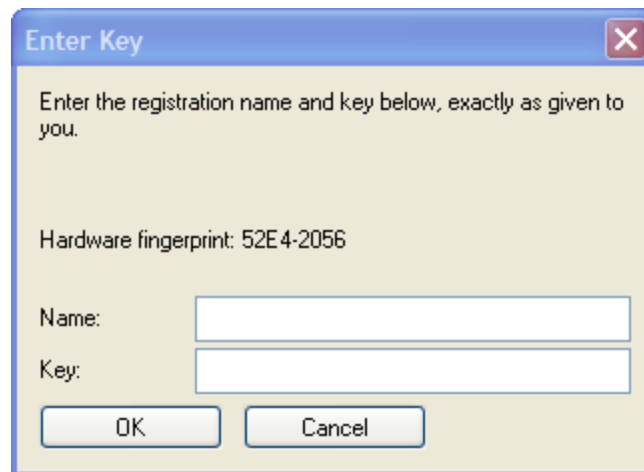
## Registration

1. When MindManager starts you will be notified that your copy is not registered. Click the **Enter key...** button.

OR

Click Start > MasterMap Linker Add-in for MindManager > MasterMap Linker Registration

2. On the registration form, enter your name and the received registration key.



3. Click **OK**.

4. **MasterMap Linker** is registered.

## 1.4 Uninstalling the add-in

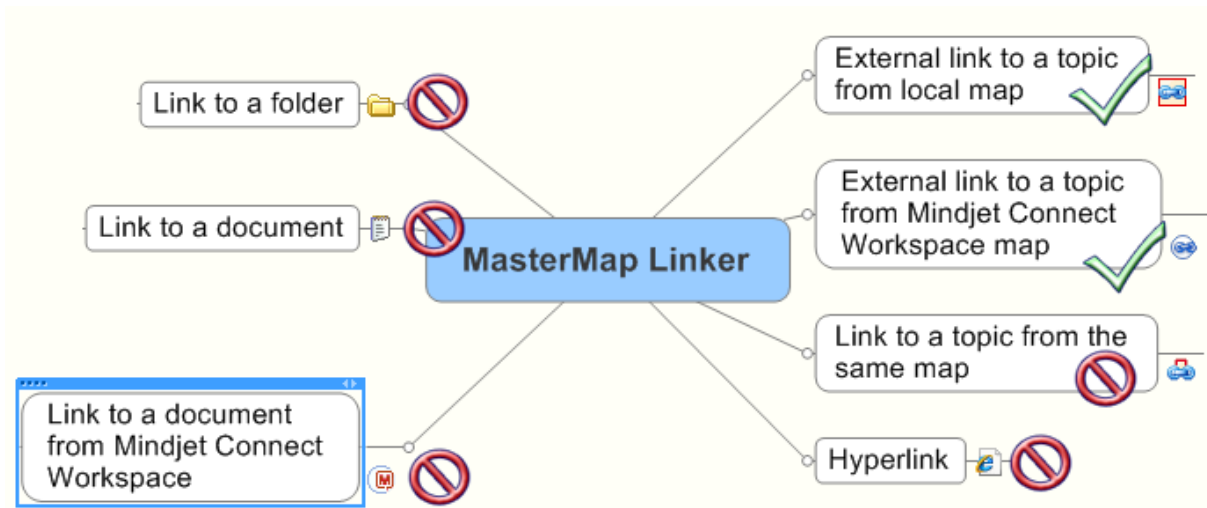
**MasterMap Linker** can be uninstalled in several ways:

- Control panel:
  1. Click **Start > Settings > Control Panel**. (If you are using Windows XP, use the Classic View of Control Panel.)
  2. Double-click **Add/Remove Programs**.
  3. From the list of **Currently Installed Programs**, select **MasterMap Linker**.
  4. Click **Change/Remove**. If you click **Change**, you need to click **Remove** in the window that opens.
  5. Follow the instructions on the screen until the program files are removed.
- Installation package:
  1. Launch the installation package.
  2. Follow the instructions on the screen until the program files are removed.

## 2 Using MasterMap Linker

### 2.1 Getting started

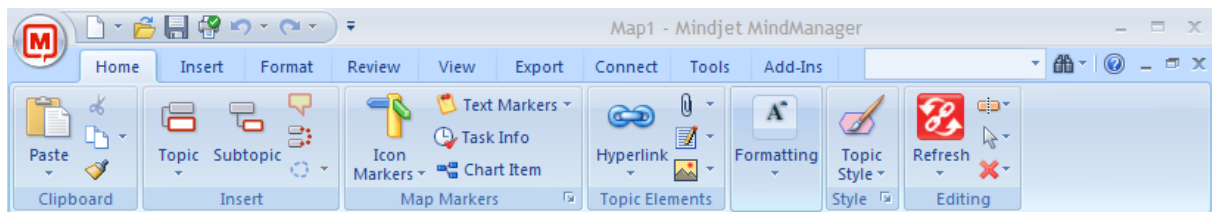
**MindManager** has several types of hyperlinks. **MasterMap Linker** operates only with **external links** to topic from local or Mindjet Connect Workspace map.



If you already have external links to some topics you can simply click the **Refresh** button



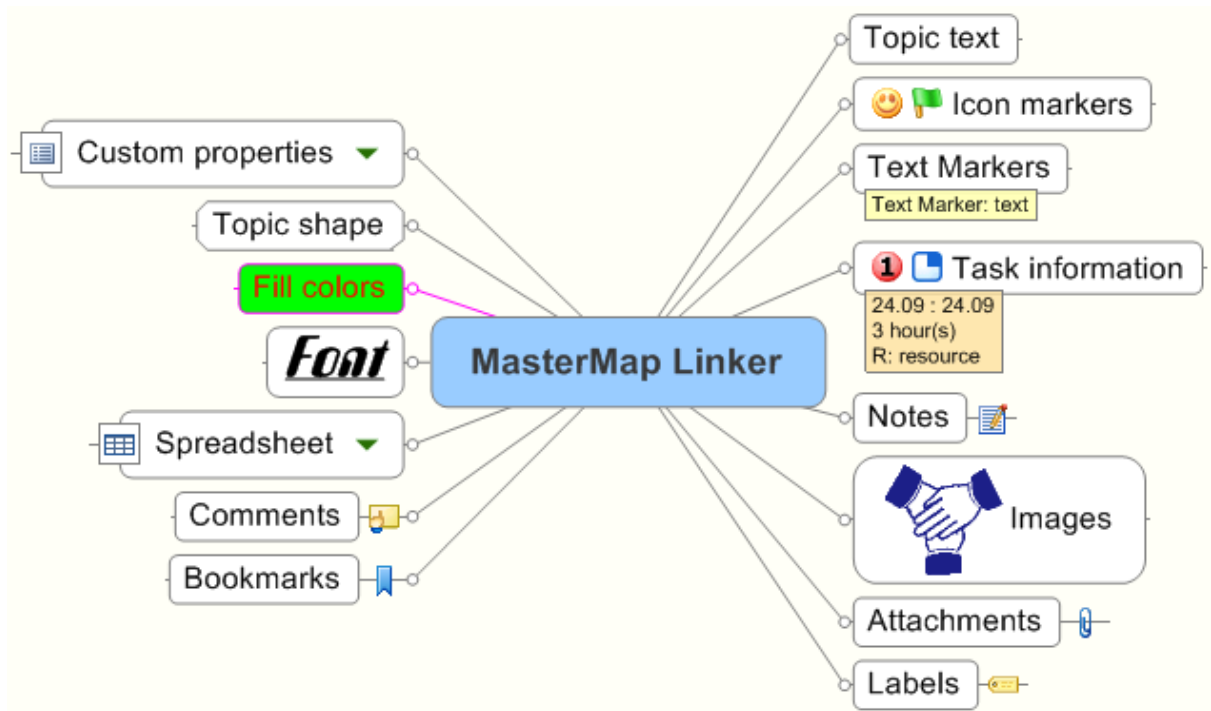
which is at **Editing** section of **Home** ribbon bar and your data will be refreshed.



**MasterMap Linker** works with the following topic elements:

- Topic text
- Icon markers
- Text markers
- Task information
- Notes
- Images
- Attachments
- Labels
- Bookmarks
- Comments
- Spreadsheet
- Font
- Fill colors
- Topic shape
- Custom properties

These topic elements in MindManager are displayed on image below:



You can easily specify which topic elements you want to be refreshed by changing the refresh settings.

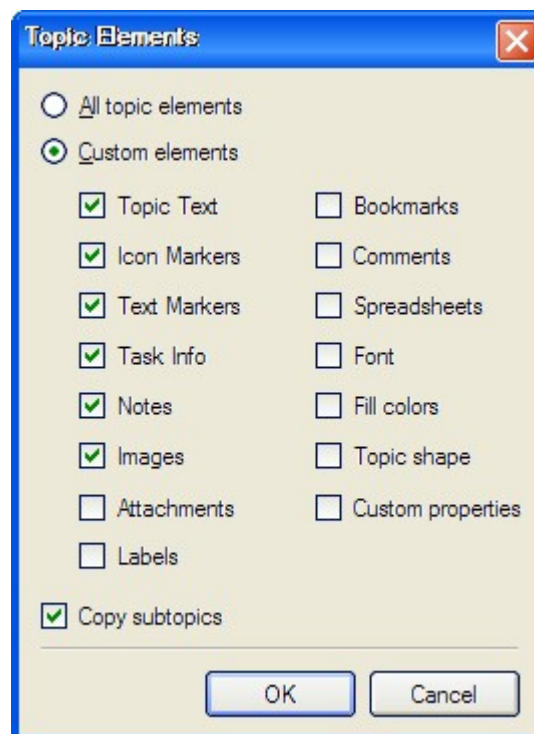
## 2.2 Refresh settings

### Topic Elements

Click **Topic Elements...** item in **Refresh** button popup menu and you will see the **Topic Elements** dialog where you can choose preferable elements for refresh.

You can choose either **All topic elements** or **Custom elements** to be refreshed.

For example, if you added some notes or marker to the topic and don't want this data to be changed during refresh you need to uncheck appropriate topic element in the **Topic Elements** dialog by choosing the **Custom elements** option.



**Note:** At least one topic element should be selected if you chose **Custom elements** option.

**Priority** and **Completion** icon markers belong to task Information and will be updated if the Task Information option is checked.

**Spreadsheet** and **Custom property** cannot be set for one topic at the same time. If you chose both items to be updated the priority will take the data of the linked topic, but not a master topic.

## Copying of the subtopics

If you checked **Copy subtopics** option the subtopics of master topic will be removed and subtopics of the linked topic will be copied to a master map as subtopics of the master topic. If this option is unchecked then subtopics of the master topic will not be changed.

## Default refresh settings

### Custom elements:

- Topic text
- Icon Markers
- Text Markers
- Task Info
- Notes
- Images

**Copy subtopic** option is not checked.

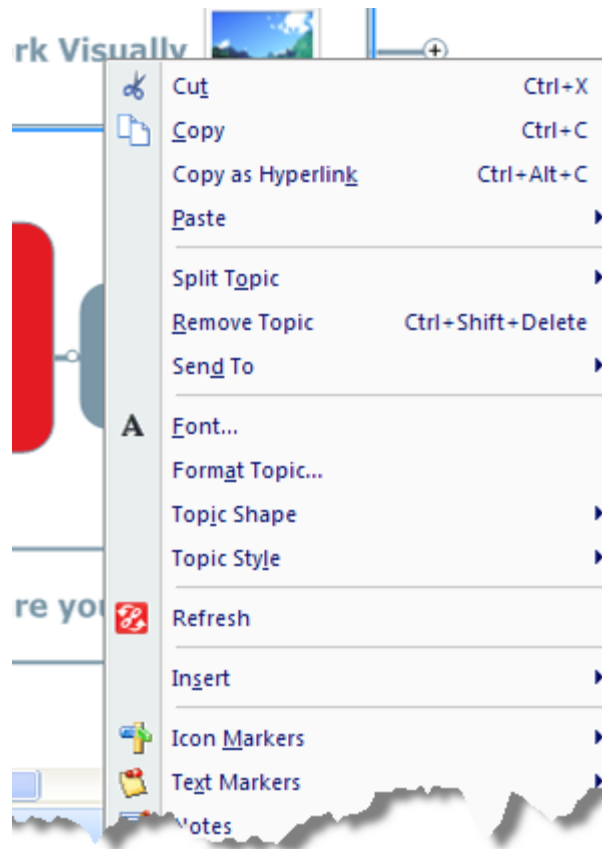
## Restore default refresh settings


To restore default refresh settings just click the **Restore default refresh settings** item in **Refresh** button popup menu.

## 2.3 Topic context menu

You can refresh the data for some specific selected topic(s) without need to update the whole map.

Select topic(s) and click  **Refresh** item in context menu of the topic.



**Note:** This item is available only for the topics with external hyperlink 

### 3 Technical Support

If you have any questions or suggestions regarding our product - please contact us by email: [support@mind2chart.com](mailto:support@mind2chart.com).

© ApriorIT All rights reserved

This document is being created by ApriorIT.  
The content is subject to change without prior notice.  
Changes, if any, will be incorporated in future releases.

All brands and product names are the trademarks or registered trademarks of the respective holders.

No part of this document may be reproduced for commercial purpose unless prior permission is obtained from the copyright holder.